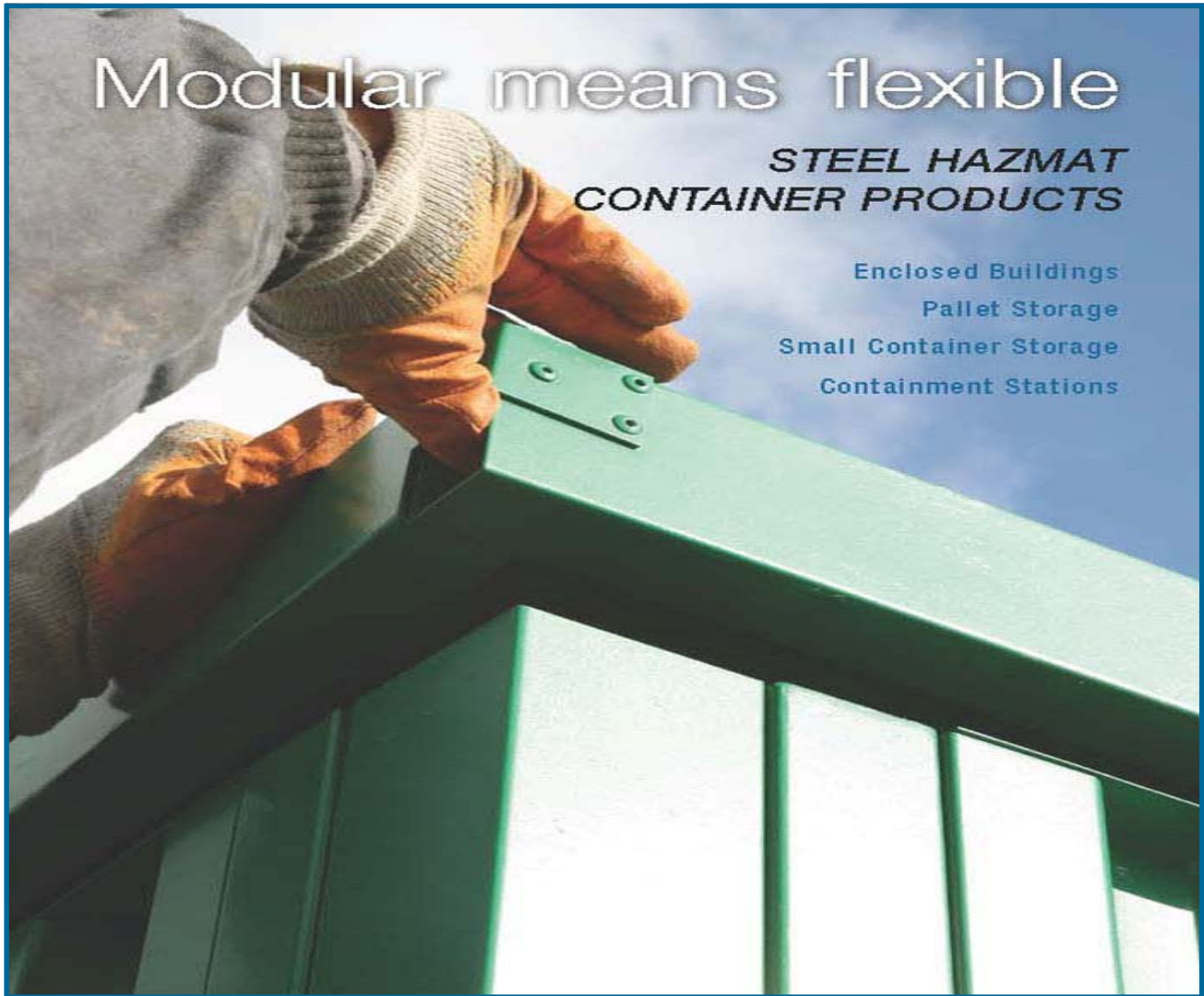


# Modular means flexible

## **STEEL HAZMAT CONTAINER PRODUCTS**

Enclosed Buildings  
Pallet Storage  
Small Container Storage  
Containment Stations



## *Easy traveller...*

**All products can be shipped knockdown in a closed trailer.**  
They can be shipped in stacks of up to 6 units. All modular components are packaged inside of the sump floor.



*Easy knockdown and transportation*

# HazMat

# Enclosed Buildings



## *Rack it.....*

All modular components are shipped inside the container sump and covered by the modular roof. Corner posts are assembled first to allow wall panels and doors to be secured



## *Mount it...*

Once all wall and roof components are unpacked the units require approximately 1-2 hours for assembly (2 people) depending on size. Same size panels allow for flexibility in door position around the perimeter



## *Use it...*

Final assembly is secured by forged eyebolts on the roof to allow the unit to be lifted from the roof or simply by a forklift from the sump

# Adaptable to your changing needs...

The unique profile of the walls and roof offers more strength and durability. All units offer double lockable doors and are constructed with 100% galvanized steel, with or without powder coating. All sumps include galvanized grates and are continuously welded.

## PLATFORM SIZES

9 Drums	7 x 7
15 Drums	7 x 10
24 Drums	7 x 16
32 Drums	7 x 23



Spill platform/floor also available separately



vents



7 x 7



7 x 10



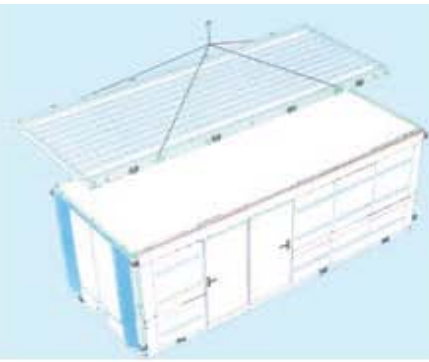
7 x 16



7 x 23

Model		Secur Box	Secur Box	Secur Box	Secur Box
Outside Dimensions	L x D x H	83" x 83" x 86"	83" x 103" x 86"	83" x 189" x 86"	83" x 209" x 86"
Inside Dimensions	L x D x H	78" x 34" x 78"	111" x 79" x 78"	190" x 79" x 78"	79" x 190" x 78"
No. of Doors		1	1	2	3
Sump Capacity		268 gal	365 gal	611 gal	869 gal
Load Capacity		5,400 lbs	9,000 lbs	14,400 lbs	19,200 lbs
Storage Capacity	55 gal drums	9	15	24	32
Model No.	Painted	30Q0707P	30Q0710P	30Q0716P	30Q0723P
Model No.	Galvanized Steel	30Q0707G	30Q0710G	30Q0716G	30Q0723G
Model No.	Sump & Grating only	30Q0707S	30Q0710S	30Q0716S	30Q0723S

# HazMat Pallet Storage



*Expand as  
you grow...*

Modular and expandable pallet storage where spill containment is mandatory. Each unit includes 2 separate sumps on 2 separate levels. 4 or 8 pallet units can be expanded for more capacity by simply connecting more 4 or 8 pallet units.

- » 100% galvanized and powder coated
- » 6" sump
- » sliding door for easy access
- » lockable doors



## Pallet Storage

MODEL	3000416 4 Pallets	3000832 8 Pallets
Dimensions L x D x H (in)	112 x 56 x 132	224 x 56 x 132
Shipping Weight (kg)	1,750	3,500
Load Capacity (kg)	9,000	18,000
Containment (liters galvanized)	243	486
Order No. (part)	3000416P	3000832P



# HazMat Small Container Storage



*Get organized, get safe.....*

Safety containment building to accommodate smaller containers and/or smaller quantities of dangerous liquid products.

100% galvanized for rust prevention.

Lockable doors for easy access.

**Good for storing...**

- *Petroleum products*
- *Lubricants*
- *Pesticides*
- *Batteries*
- *Miscellaneous liquids*



Continuously welded floor for spill containment and environmental compliance

Shipped 6 per stack in closed trailer

2" containment per shelf



## Small Container Storage

MODEL	30QRG0707	30QRG0709	30QRG0714
Dimensions L x D x H (ft)	86 x 107 x 87	86 x 109 x 87	86 x 114 x 87
Shipping Weight (lbs)	500	750	925
Capacity (lbs)	1,200	2,400	3,600
Order No. Galvanized Steel	30QRG0707	30QRG0709	30QRG0714

# HazMat Containment Stations

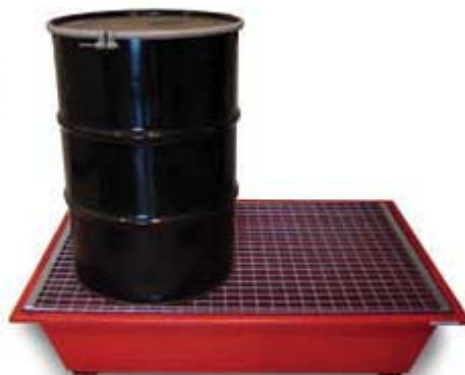


## Enclosed HazMat Storage

<b>MODEL</b>	<b>2 Drum</b>	<b>4 Drum</b>
Dimensions (LxDxH)	54 x 34 x 55	56 x 56 x 55
Shipping Weight (kg)	425	585
Load Capacity (kg)	1,200	2,400
Order No. (painted)	30QPE5434	30QPE5656

## IBC Tote Storage

<b>MODEL</b>	<b>1 IBC Locker</b>
Dimensions (LxDxH)	67 x 64 x 80
Shipping Weight (kg)	450
Load Capacity (kg)	4,000
Order No. (painted)	30QIBCS6764



## Spill Pallets

<b>Model</b>	<b>2 Drum</b>	<b>4 Drum</b>
Dimensions (LxDxH)	58" x 37" x 14"	58" x 54" x 14"
Load Capacity	1,250 lbs	2,500 lbs
Order No. (painted)	30QPP5837	30QPP5854

# Flexibility and compliance...

- 100% powder-coated surface
- Continuous welded sump
- Galvanized grating



## Caged Containment Platform

Model	8 Drum
Dimensions (LxDxH)	122" x 62" x 96"
Shipping Weight	1,537 lbs
Load Capacity	4,800 lbs
Sump Volume	490 gal
Order No. (painted)	30QPCC2262

## IBC Tote Spill Sumps

MODEL	67" x 64" IBC Sump
Dimensions L x D x H (in)	67 x 64 x 18
Shipping Weight (lbs)	550
Load Capacity (lbs)	5,000
Sump Volume (gal)	385
Order No. Painted	30QIBC6764



## Splash Containment Pallets

Model	2 Drum	4 Drum
Dimensions (LxDxH)	58" x 37" x 55"	58" x 54" x 14"
Shipping Weight	320 lbs	410 lbs
Load Capacity	1,200 lbs	2,400 lbs
Order No. (painted)	30QPPS5837	30QPPS5854